

## Adding Port 80

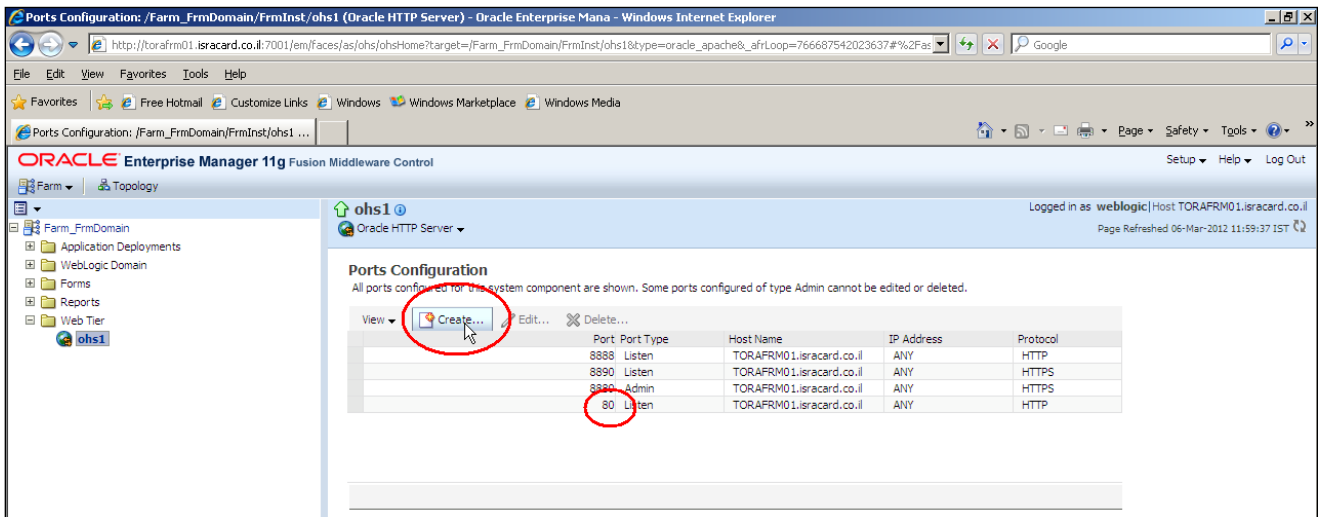
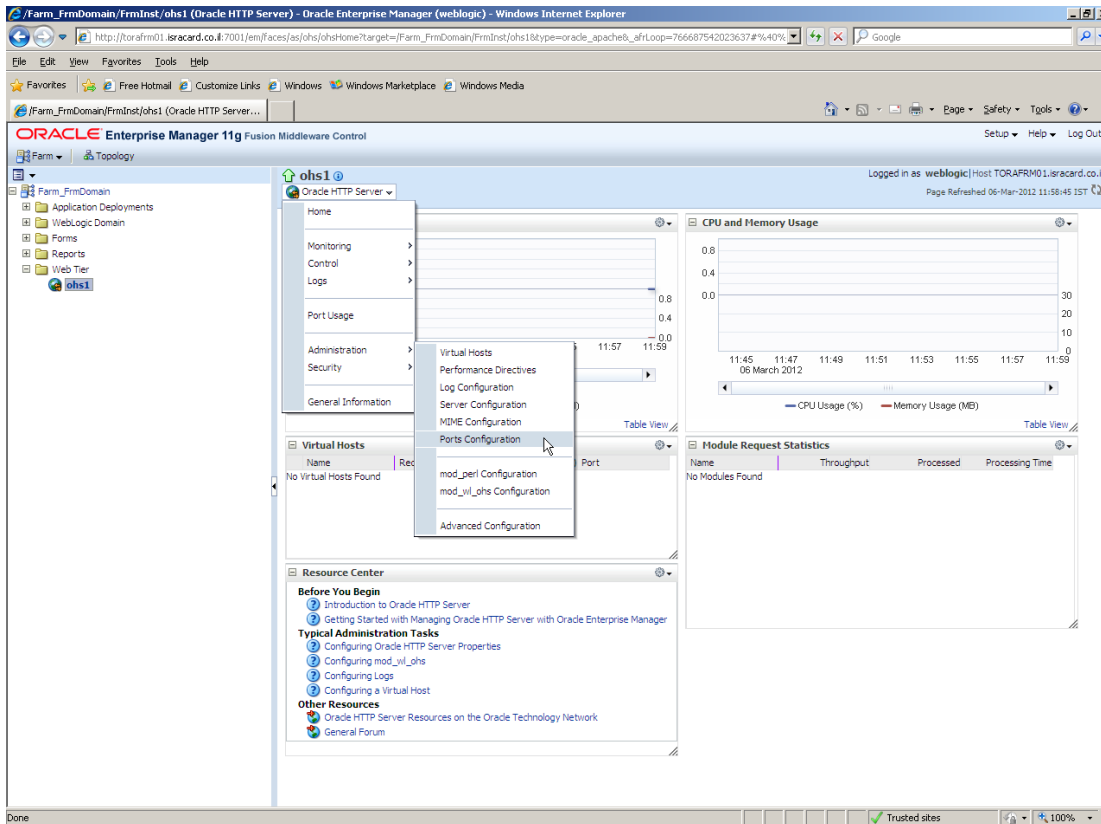
Enter the em console

<http://<server name>:7001/em>

The screenshot displays the Oracle Enterprise Manager 11g Fusion Middleware Control console. The main view is titled "Farm\_FrmDomain" and shows the status of various components. A green pie chart indicates that 9 components are up. A red pie chart indicates that 3 components are down. The "Fusion Middleware" section lists several components, including "Web Tier" and "sps1", which are circled in red. The "Web Tier" component is shown as down, and "sps1" is also shown as down. The "Form Resource Center" section is also visible at the bottom.

Name	Status	Target
Application Deployments		
Internal Applications		
formsapp(11.1.2)	Up	cluster_forms
formsapp(11.1.2)	Up	WLS_FORMS
formsconfigbeans	Up	cluster_forms
formsconfigbeans	Up	WLS_FORMS

Name	Status	Host	CPU Usage (%)
WebLogic Domain			
FrmDomain			
AdminServer	Up	TORAFRM01.isra...	
cluster_forms	Up	TORAFRM01.isra...	
WLS_FORMS	Up	TORAFRM01.isra...	
cluster_reports	Down		
WLS_REPORTS	Down		
Forms			
forms	Up	TORAFRM01.isra...	
Reports			
ReportsTools		TORAFRM01.isra...	
ReportsTools	Down	TORAFRM01.isra...	0.00
Web Tier	Down	TORAFRM01.isra...	0.00
sps1	Down	TORAFRM01.isra...	0.00



Restart component afterwards